

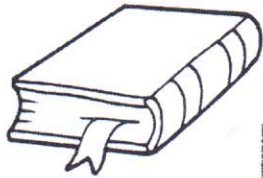
Procvičuj podle vzoru:

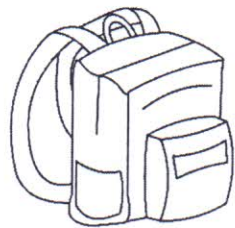
WHAT IS IT?



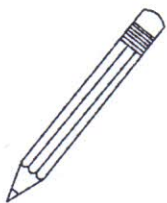
IT IS CAT.



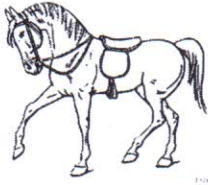








Vyber správnou odpověď:



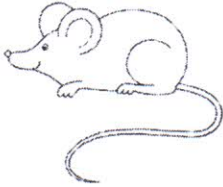
Is it horse?

- a) Yes, it is.
- b) No, it is not.



Is it dog?

- a) Yes, it is.
- b) No, it is not.



Is it cat?

- a) Yes, it is.
- b) No, it is not.



Is it turkey?

- a) Yes, it is.
- b) No, it is not.



Is it chicken?

- a) Yes, it is.
- b) No, it is not.

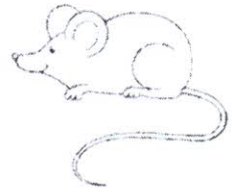


Is it lion?

- a) Yes, it is.
- b) No, it is not.

Přelož:

Je to myš? _____



Ano, to je. _____



Je to kachna? _____

Ano, to je. _____

Je to pes? _____

Ne, to není. _____



Zopakuj si:

WHAT'S YOUR NAME? = JAK SE JMENUJEŠ?

(vyslovujeme: vots jór nejm?)

MY NAME IS ... = JMENUJI SE ...

(vyslovujeme: maj nejm iz ...)

I AM ... = JÁ JSEM ...

(vyslovujeme: ajem ...)

HOW OLD ARE YOU? = KOLIK JE TI LET?

(vyslovujeme: hau old ár jů?)

I AM FIFTEEN = JE MI PATNÁCT

(vyslovujeme: ajem fiftýn)

HOW ARE YOU? = JAK SE MÁŠ?

(vyslovujeme: hau ár jů?)

I AM FINE. = MÁM SE DOBŘE.

(vyslovujeme: ajem fajn)

WHERE ARE YOU FROM? = ODKUD JSI?

(vyslovujeme: wér ár jů from?)

I AM FROM CZECH REPUBLIC. = JSEM Z ČESKÉ REPUBLIKY.

(vyslovujeme: ajem from ček repablik)

Už známe:

WHAT IS IT? = CO TO JE?

(vyslovujeme: vot iz it?)

IT IS CAT. = TO JE KOČKA.

(vyslovujeme: it iz ket)

Naučíme se nově otázku:

IS IT CAT? = JE TO KOČKA?

(vyslovujeme: iz it ket?)

A odpovědět můžeme:

YES, IT IS. = ANO, TO JE.

(vyslovujeme: jés, it iz)

NO, IT IS NOT. = NE, TO NENÍ.

(vyslovujeme: nou, it iz not)